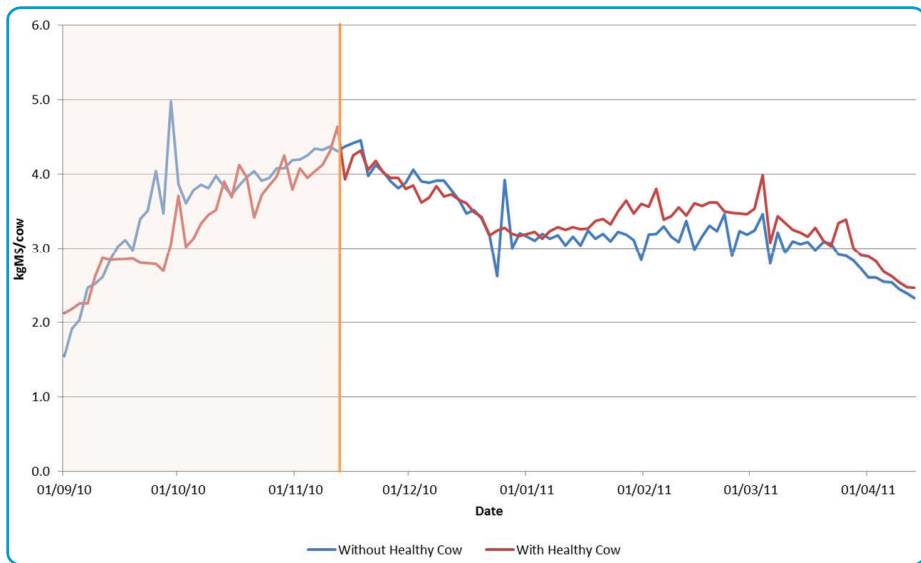


Milk Production Results with and without healthyCOW Supplementation



healthy COW

This data is a result of a farm study done with the Dairy Farmer and AB Lime



AB LIME

Call 0800 227 559

www.healthycow.co.nz

The Farm Study

- From the 1st August until 4th November both Herds received calcium supplementation (the farm manager wanted/needed the calcium in both herds during this time).
- On 4th November, one older herd stopped receiving calcium via supplementation, and the other herd continued receiving calcium right through to 13th April.

What we found is outlined in the following graph showing the two day average milk production per cow. The younger herd had slowly (but surely) overtaken the milk production of the older herd (once the older herd stopped receiving the calcium supplementation) even though they were expected to produce less. Our thoughts quickly turned to “what would the older herd have produced if they received the calcium?”. It is also interesting to note that the herd receiving the calcium had a 3% better conception rate at mating too.

healthy COW

